

## Technical data

Standard: EN/IEC61439-3

Modules (No.): 4, 6, 8, 10, 12, 14, 16

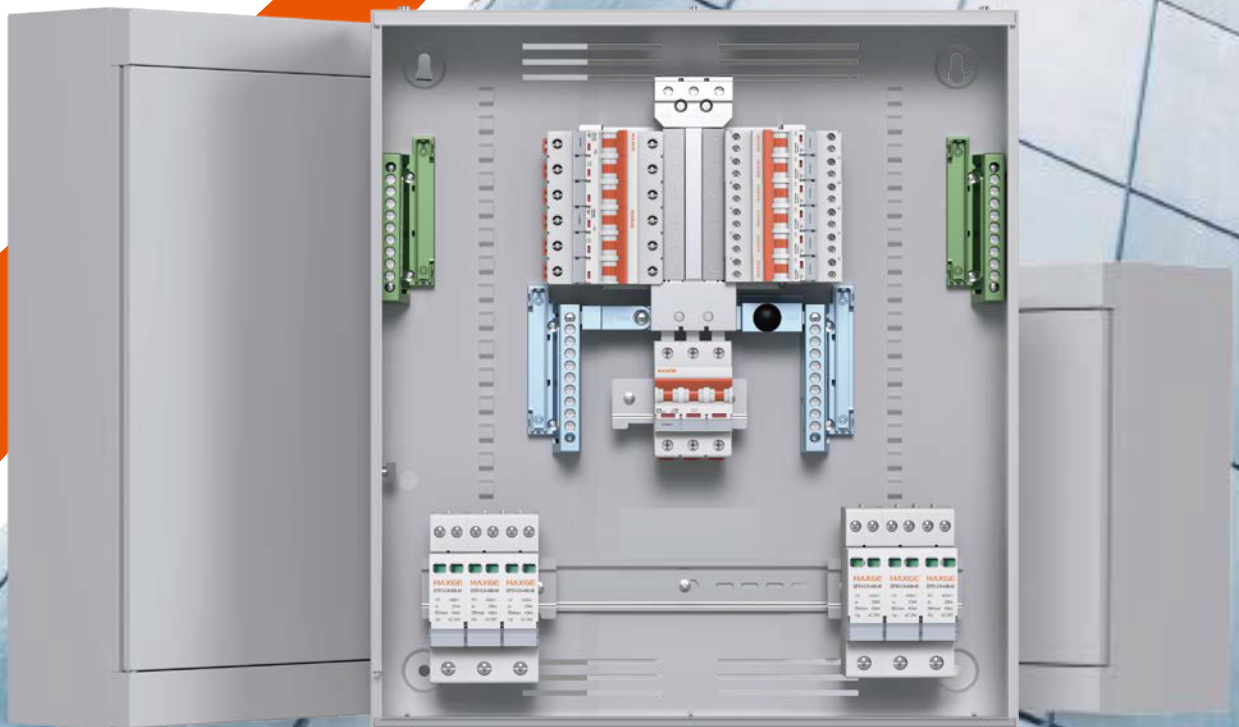
Rated current In(A): 125A,250A

Degree of protection: IP20

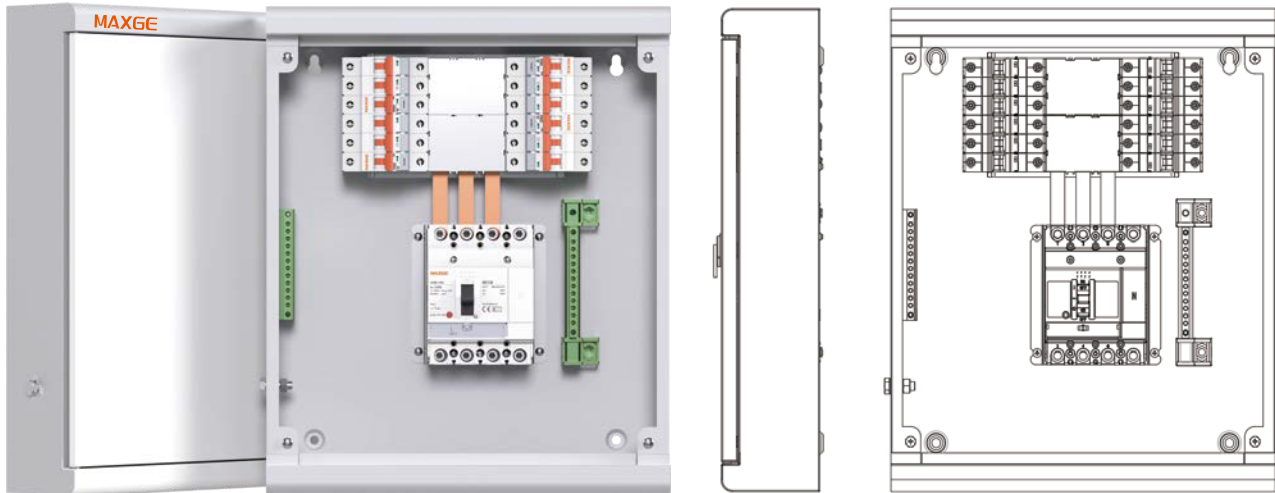
## Application:

SGDB3 series 3 phase distribution box is available in plug in, din rail designs for indoor and outdoor applications and also available with main switch MCB, Isolator, MCCB or RCCB.

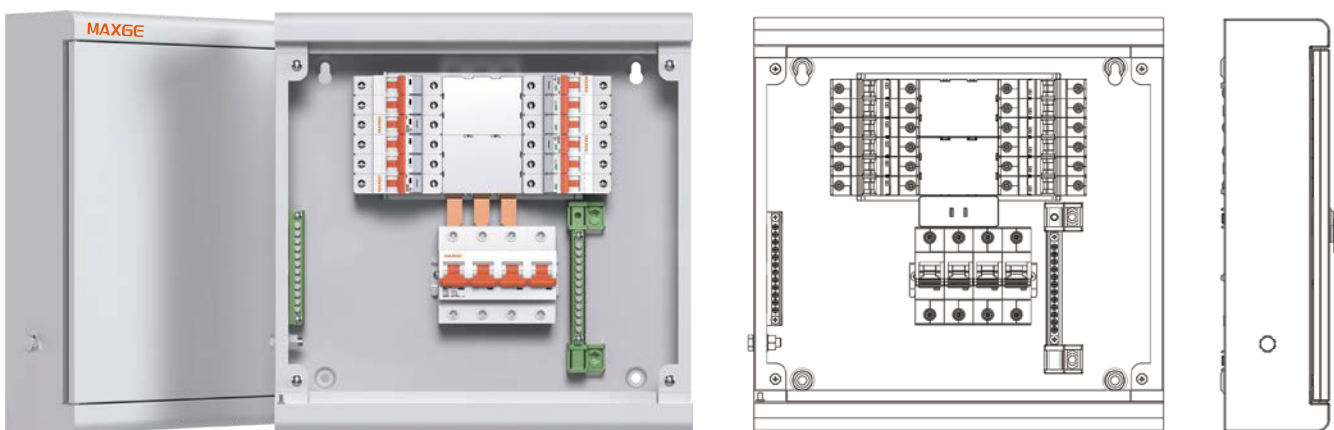
- (1).Door plate: 1.2mm Box: 1.0mm
- (2).125A busbar copper: 1.5mm
- (3).250A busbar copper: 3.0mm
- (4).Neutral ground copper strip: 8\*12mm
- (5).After pickling and phosphating, epoxy resin was used for electrostatic spraying



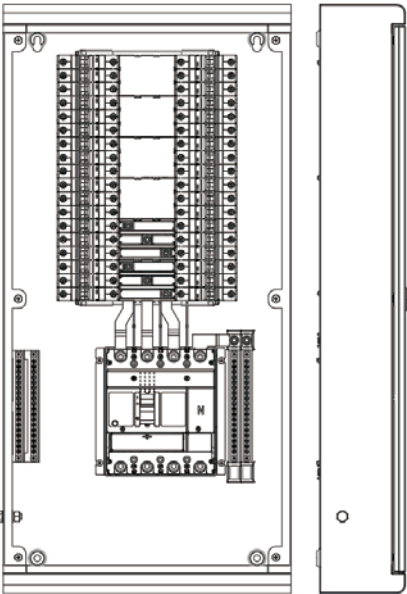
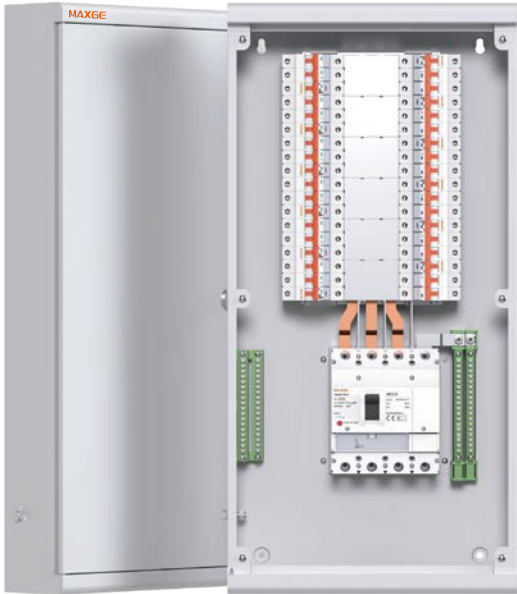
## SGDB3 Series 3 phase Distribution Box(Economic Type )



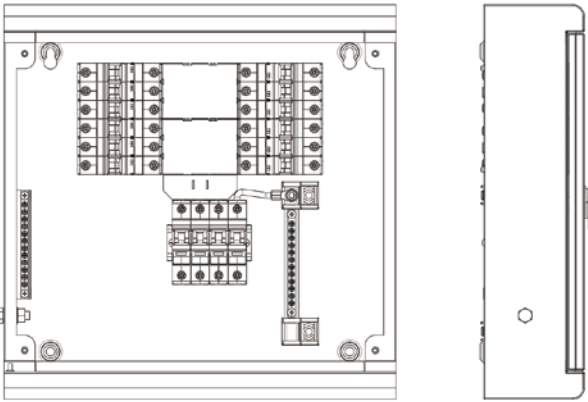
## SGDB3 Series 3 phase Distribution Box(Economic Type )



## SGDB3 Series 3 phase Distribution Box(Economic Type )



## SGDB3 Series 3 phase Distribution Box(Economic Type )



## Specifications

Rated Current $I_n$ (A)	Modules	$L \pm 2$ (mm)	$H \pm 2$ (mm)			$W \pm 2$ (mm)
			MCB/ISO	MCCB125	MCCB250	
125/250A	4ways	380	383	485	560	108
125/250A	6ways	380	437	539	614	108
125/250A	8ways	380	491	593	668	108
250A	10ways	380	722	722	722	108
250A	12ways	380	776	776	776	108
250A	14ways	380	830	830	830	108
250A	16ways	380	884	884	884	108

