

ACB


Air Circuit Breaker



Committed to becoming a world-class manufacturer of intelligent electric

<https://www.maxge.com>

Ratings and Specifications

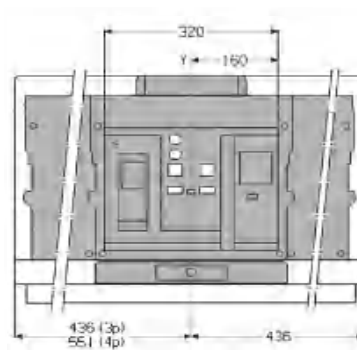
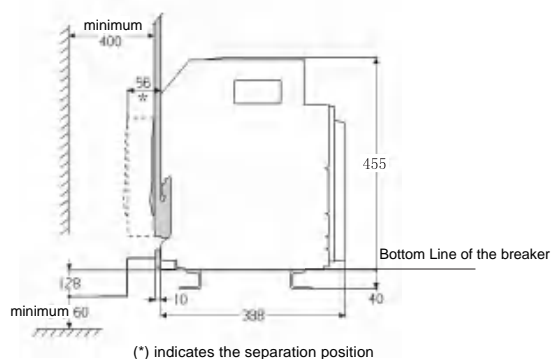
Frame Size		
Characteristics	MGW6-7500	
Frame size rated current In(A)	7500	
Number of poles	3,4	
Rated current In(A)	5000,6300,7500	
Rated voltage Ue(V)	50/60Hz AC 380V, 400V, 415V, 440V	
Insulation voltage Ui(V)	1250V	
Impulse withstand voltage Uimp(V)	12	
Rated current of N-pole In(A)	50%/100%In	
Ultimate breaking capacity Icu(kA)	380/400/415/440	135/150
Operation breaking capacity Ics(kA)	380/400/415/440	135/150
Short-time withstand current (1s) RMS Icw(kA)	380/400/415/440	135/150
Max total tripping time(ms) without time delay		12-18
Closing time(ms)	60(max)	
Characteristics		
	Electrical life	
	Mechanical life	Maintenance free
		Maintenance required
Connection mode		Vertical
Overall dimension H(height)XW(width)XL(thickness)	Fixed type 3P	
	Fixed type 4P	
	Drawout type 3P	495X872X398
	Drawout type 4P	495X987X398

MGW6 Series

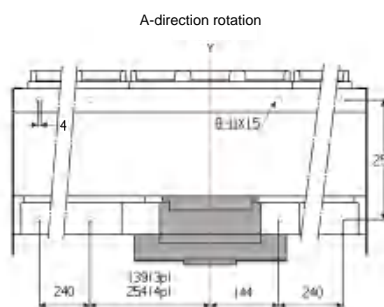
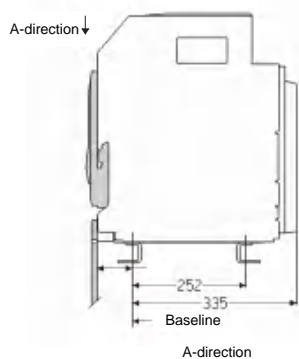
Overall and Mounting Dimensions

MGW6-7500/3 Poles-4 Poles ACB Drawout Type

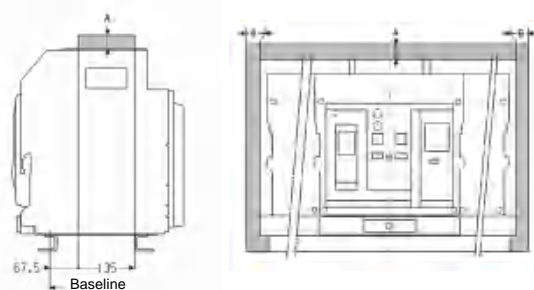
◆ Dimensions



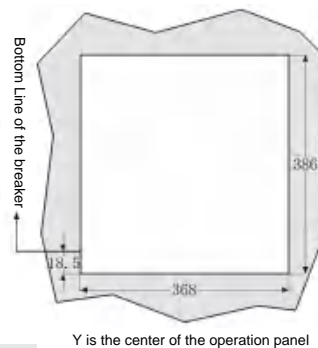
◆ Mounting dimensions



◆ Safety distance



◆ Door frame installation dimensions



	To insulator	To metal body	To live conductor
A	0	0	0
B	0	0	60